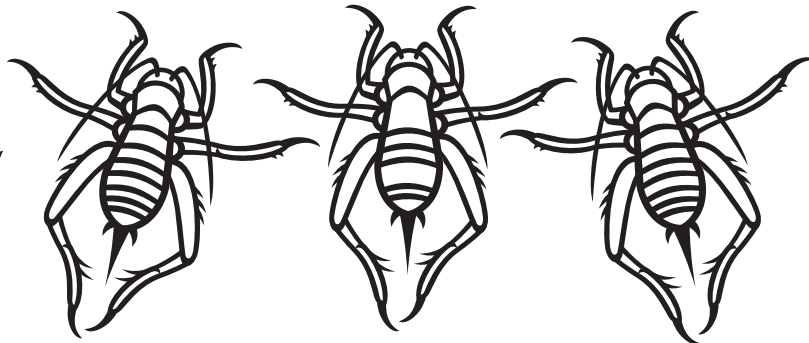




BUTTERFLY creek™

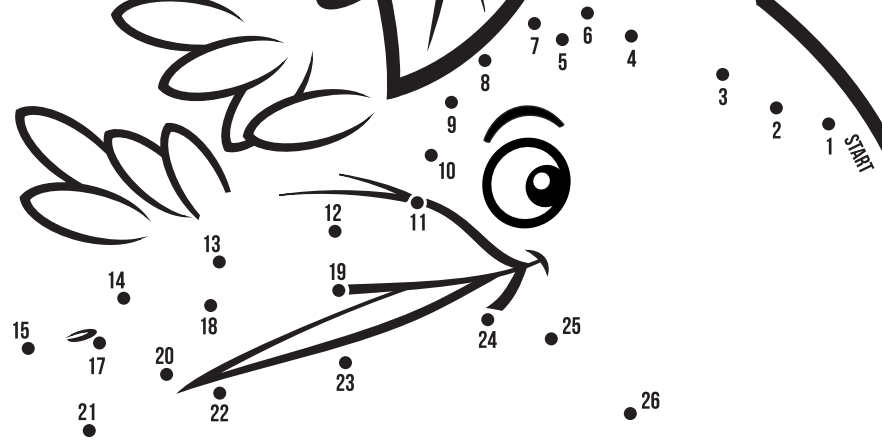
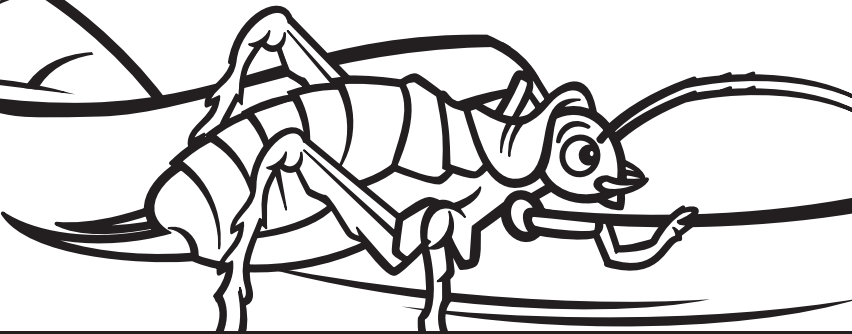
ODD ONE OUT

WHICH OF THE THREE WETAS BELOW IS NOT LIKE THE OTHERS



DID YOU KNOW?

THE GIANT WETA IS THE HEAVIEST & ONE OF THE BIGGEST BUGS IN THE WORLD.



DOT TO DOT

JOIN THE DOTS TO SEE WHO IS HIDING IN THE BUSHES





BUTTERFLY creek™

DID YOU KNOW?

KIWI'S ARE ONLY FOUND IN NEW ZEALAND,
BUT THEY ARE COUSINS TO THE EMU & MOA.



JOKE

Q. HOW DO KIWI'S STAY FIT?
A. WORM UPS

KIWI WORDFIND

Can you find all the kiwi words in the grid below.

C	F	L	I	G	H	T	L	E	S	S	D
N	O	C	T	U	R	N	A	L	E	S	R
H	F	N	P	R	E	D	A	T	O	R	E
A	O	M	S	C	H	I	C	K	S	E	X
B	R	O	F	E	A	T	H	E	R	S	T
I	A	T	B	I	R	W	C	G	N	E	I
T	G	H	U	C	H	V	T	G	E	R	N
A	E	D	R	K	I	G	A	B	S	V	C
T	E	F	R	E	D	S	H	T	T	E	T
A	B	R	O	W	N	K	I	W	I	E	I
R	P	L	W	D	Y	B	I	L	L	O	O
E	N	D	A	N	G	E	R	E	D	G	N

Endangered

Predator

Egg

Habitat

Extinction

Feathers

Flightless

Bill

Nocturnal

Burrow

Forage

Hatch

Nest

Brown Kiwi

Reserve

Conservation

Chicks