

BRILLIANT BUTTERFLIES



Butterflies are insects. They have 3 body parts: a head, thorax (middle part) and abdomen (tail end). They also have 6 legs and 4 wings.



Their large eyes are made of hundreds of tiny lenses. They can't see in detail but can detect shapes, colour and movement.

They can see ultraviolet light and so see flowers very differently to humans!



A butterfly's tongue is called a proboscis. They uncurl it like a long straw to suck up food including nectar and fruit juices.

They use their long feelers (antennae) to sniff out food and other butterflies.



BUTTERFLY creek™

BRILLIANT BUTTERFLIES



Butterflies wings are often colourful to attract other butterflies or warn predators that they are poisonous.



The wings of a butterfly are covered in tiny scales. They create the patterns and colours seen on their wings.

Butterflies don't have noses. Instead, they taste and smell food using their legs and feet.





The butterflies in our tropical house prefer to feed on rotting, rather than fresh fruit as it's full of mushy juices!

Butterflies sometimes gather to drink from puddles. A group of butterflies is called a kaleidoscope.



BUTTERFLY creek™

BUTTERFLY LIFE CYCLE



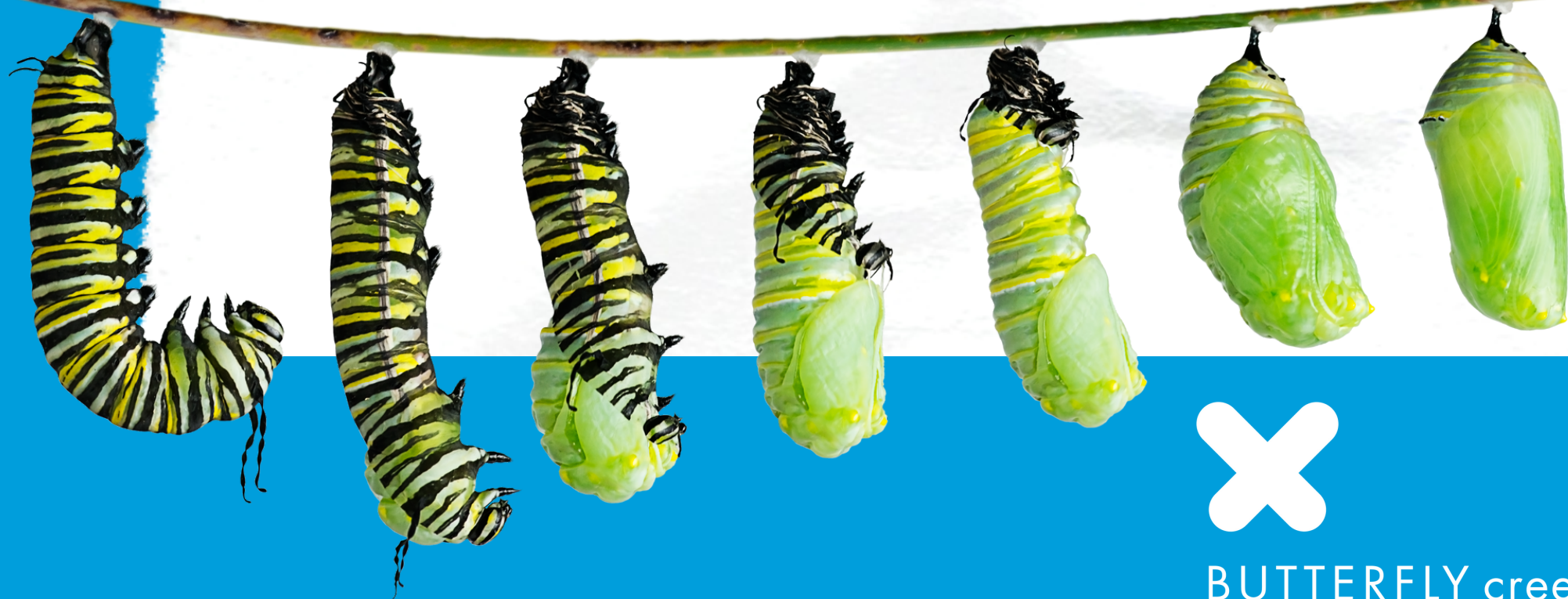
The life cycle of a butterfly has 4 stages: egg, caterpillar, pupa and adult butterfly.

After hatching, a caterpillar eats a lot and grows quickly, shedding their skin as they get bigger. They can increase in size more than 3000 times!

After about 2 weeks, the caterpillar stops eating and finds a sheltered spot to become a pupa.

The pupa is also called a chrysalis.

It protects the caterpillar as it goes through an amazing process to change into a butterfly.



BUTTERFLY creek™

QUICK QUIZ



1. TRUE OR FALSE?

Butterflies don't have ears. Instead they use body hairs to sense air movements.



2. TRUE OR FALSE?

Butterflies can be found everywhere except the Antarctic.



3. TAKE A GUESS

How fast can a Skipper Butterfly fly?

a) 10km/hr b) 30km/hr c) 60km/hr



4. TRUE OR FALSE?

The eye spots on the wings of some butterflies attract predators.



Answers
1. True 2. True 3. 60km/hr
4. False - they scare them off



BUTTERFLY creek™