

TRICERATOPS

When did they live?

Triassic

Jurassic

Cretaceous

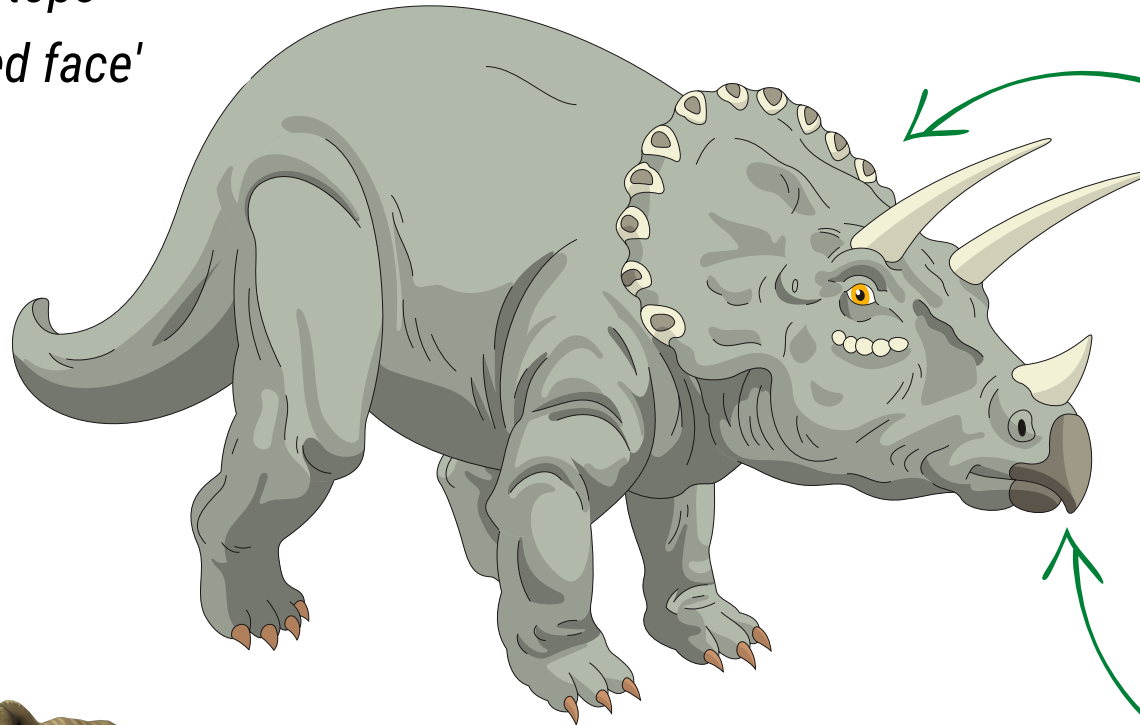
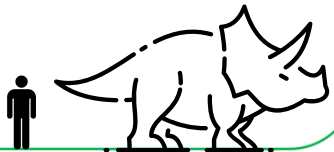
68-65 mya

Pronounced: "tri-ser-a-tops"

Meaning: 'Three-horned face'

Size & Weight

9m long and 3m tall
Average weight 6000kg



Special Features

Bony neck plate and horns that could grow 1m long for defence.

Teeth

A sharp bony 'beak' and around 800 teeth shaped for slicing tough plant matter.

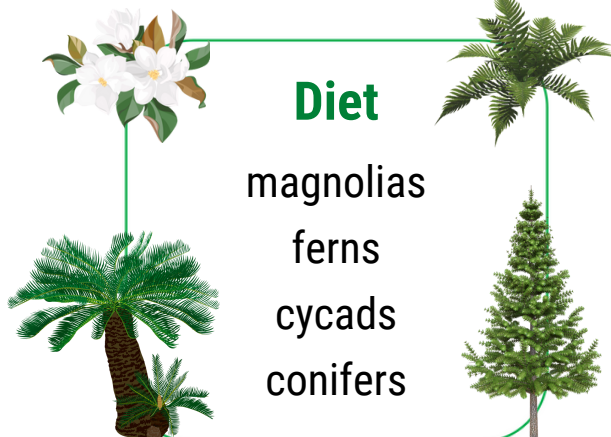
Threats

Hunted by big meat-eating theropod dinosaurs like Tyrannosaurus Rex.



Diet

magnolias
ferns
cycads
conifers



BUTTERFLY creek™

NZ ANKYLOSAUR

When did they live?

Triassic

Jurassic

Cretaceous

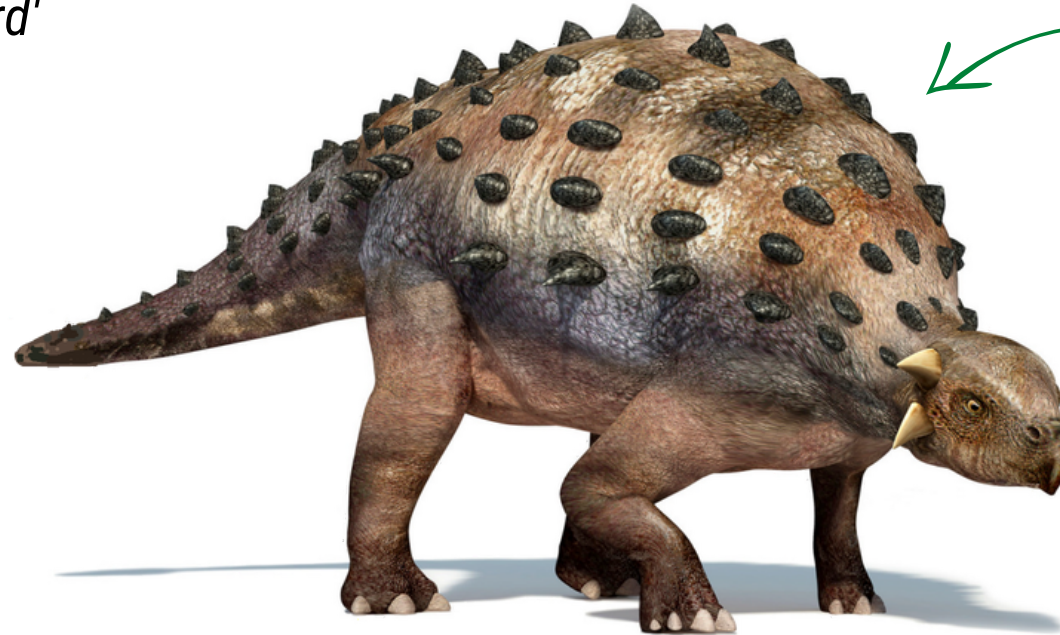
68-65 mya

Pronounced: "an-ky-low-saw"

Meaning: 'Fused lizard'

Size & Weight

3m long and 0.8m tall
Average weight 300kg



Special Features

Bony plates to help defend against attack.
NZ species did not have a tail club.

Teeth

A sharp bony 'beak' and serrated teeth shaped for nibbling vegetation.

Threats

Hunted by big meat-eating theropod dinosaurs like Tyrannosaurus Rex.



Diet

Low-growing plants e.g. ground ferns, flowers, seeds and fruit.



BUTTERFLY creek™

PARASAUROLOPHUS

When did they live?

Triassic

Jurassic

Cretaceous

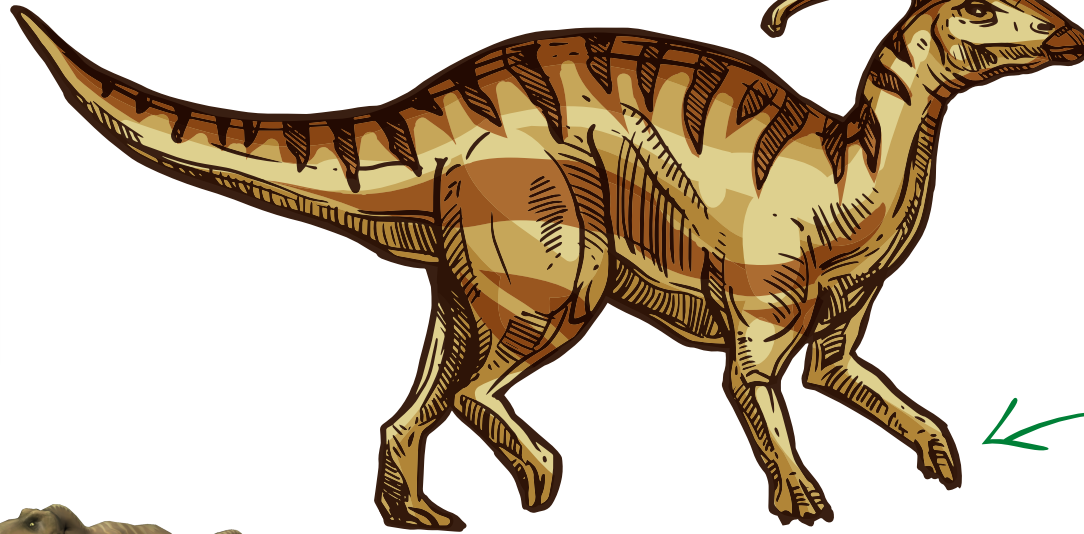
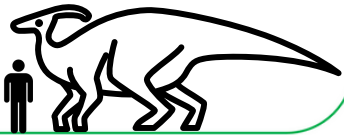
76-64 mya

Pronounced: "pa-ra-saw-rol-off-us"

Meaning: 'Near crested lizard'

Size & Weight

11m long and 4m tall
Average weight 3500kg



Bony Head Crest

Scientists think this was used to make loud trumpeting calls to others in the herd.

Posture

They could switch between walking on two (bipedal) or four legs (quadrupedal).

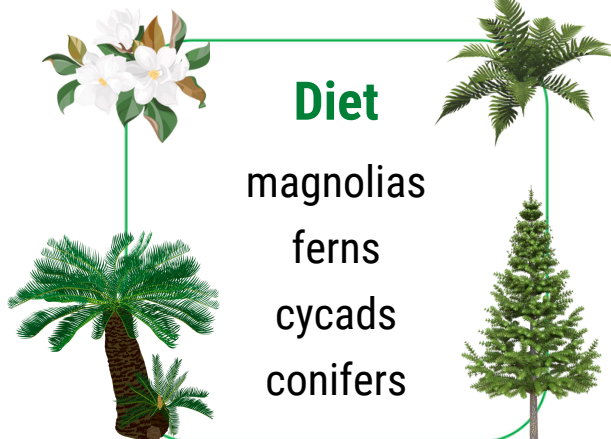
Threats

Hunted by big meat-eating theropod dinosaurs like Tyrannosaurus Rex.



Diet

magnolias
ferns
cycads
conifers



BUTTERFLY creek™

TYRANNOSAURUS REX

When did they live?



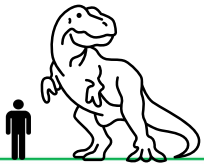
67-65 mya

Pronounced: "tie-ran-o-saw-rus"

Meaning: 'King tyrant lizard'

Size & Weight

12m long and 6m tall
Average weight 6000kg



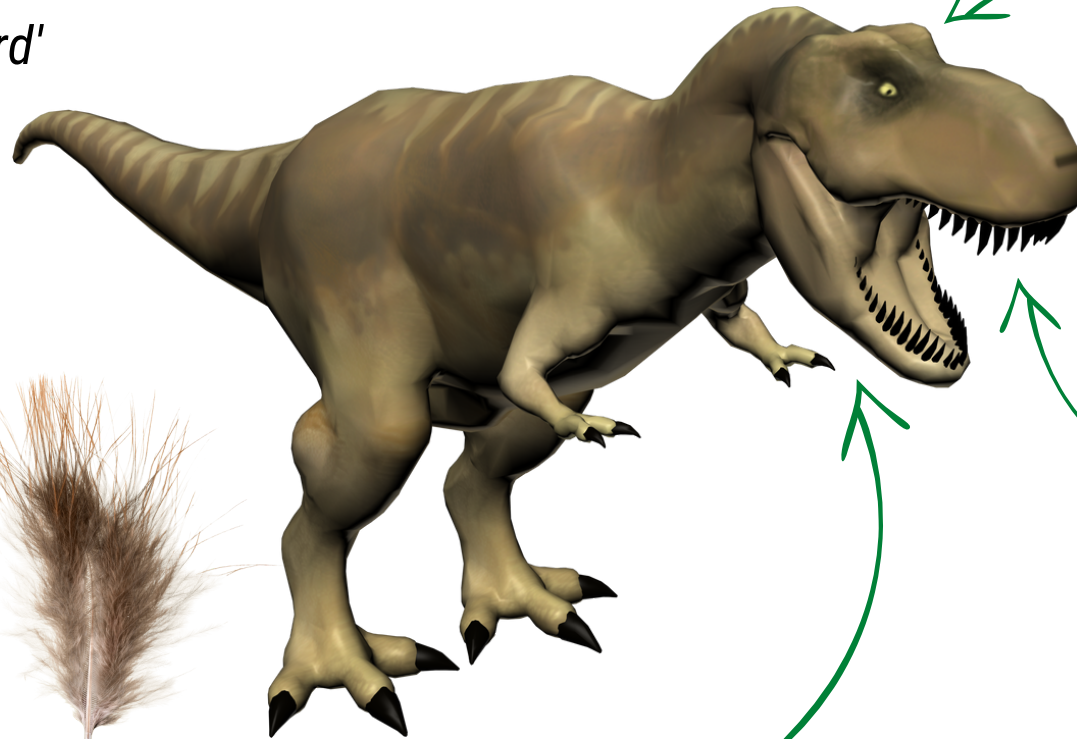
Did you know?

Scientists think that T.Rex's body was actually covered in feathers.



Diet

Hunted herbivores
e.g. Triceratops,
Edmontosaurus and
Parasaurolophus.



Big Brain

T.Rex had a brain twice as big as those of other giant carnivores.

Teeth

50-60 banana-sized sharp teeth that could rip off 100kg of meat in a single bite!

Strong Jaw

T.Rex had the most powerful bite of any land animal that's ever lived!



BUTTERFLY creek™

SPINOSAURUS

Pronounced: "spy-nuh-saw-rus"

Meaning: 'Spine lizard'

When did they live?

Triassic

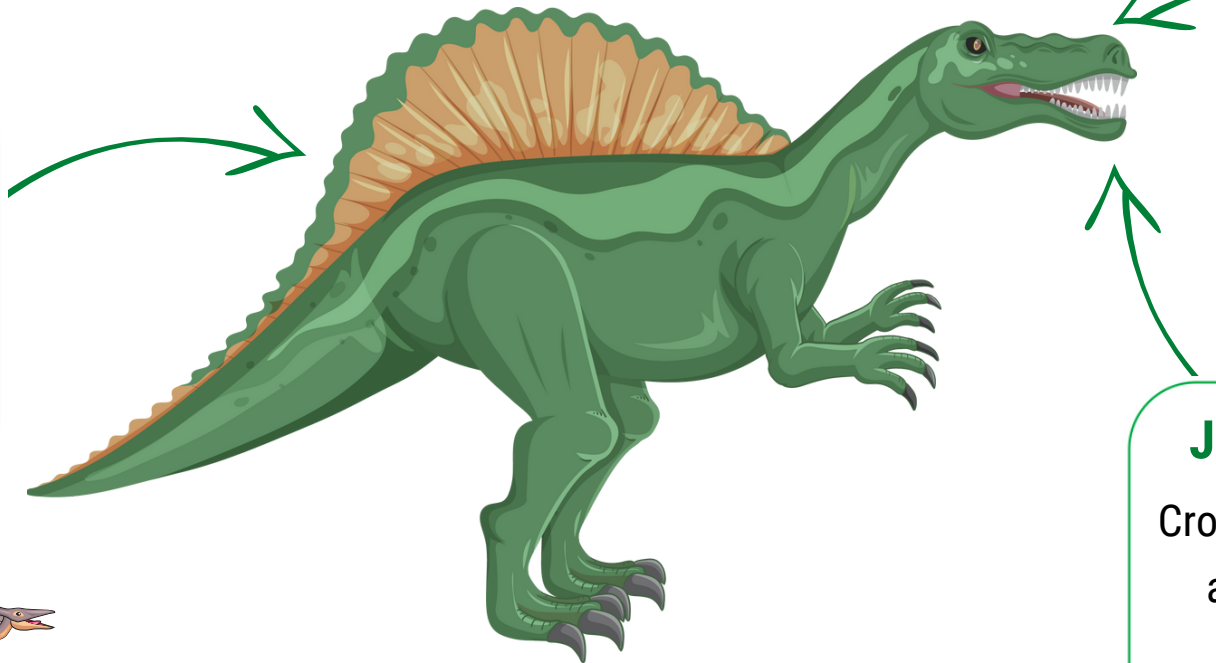
Jurassic

Cretaceous

112-72 mya

Spiny 'Sail'

Scientists think the 2m-long, skin-covered spines were used for display.



Raised Nostrils

This suggests that Spinosaurus spent lots of time underwater.

Jaw and Teeth

Crocodile-shaped jaw and 15cm-long, sharp teeth for catching large fish.

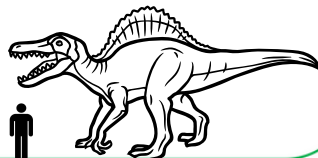
Diet

It hunted various creatures but mostly ate fish that could be the size of a car!



Size & Weight

15m long and 5m tall
Av. weight 15,000kg

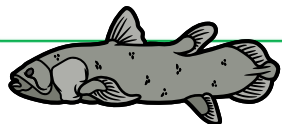


Did you know?

It's the only dinosaur that's thought to have spent most of its time in water.



BUTTERFLY creek™



VELOCIRAPTOR

When did they live?

Triassic

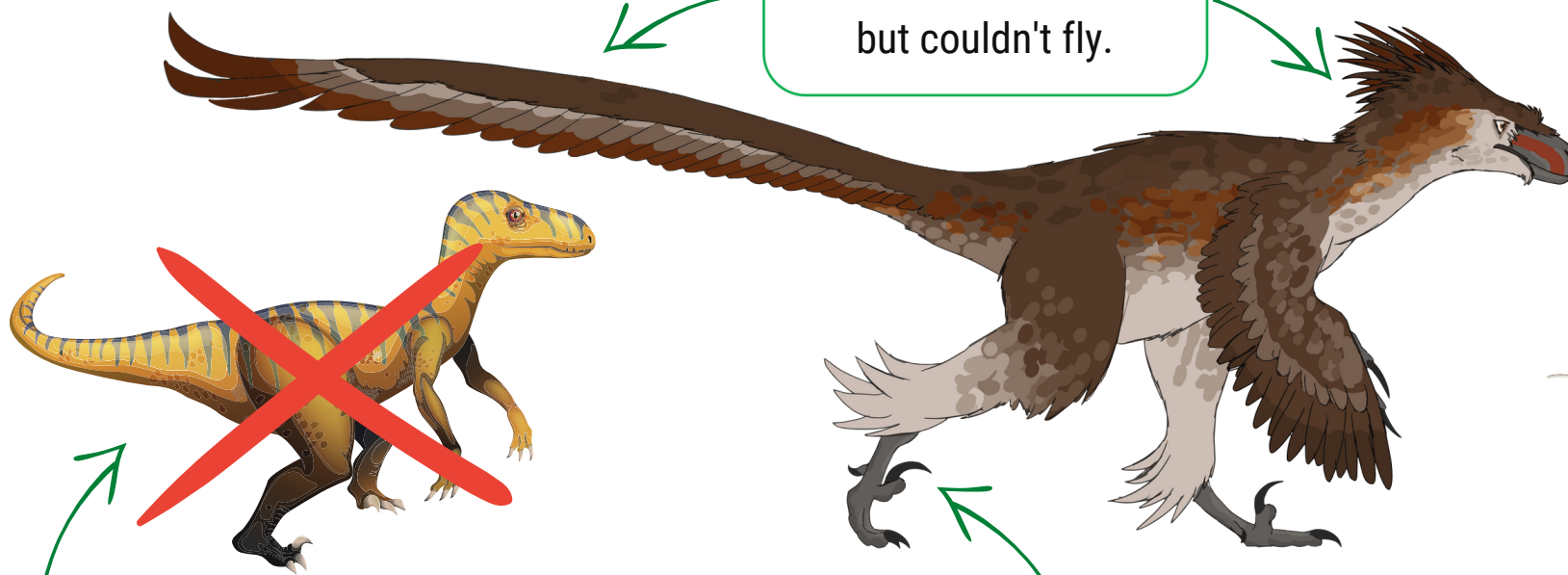
Jurassic

Cretaceous

74-70 mya

Pronounced: "vuh-lah-suh-rap-tor"

Meaning: 'Swift robber'



Feathers

For warmth and display but couldn't fly.

Senses

Excellent sense of smell and vision that helped them hunt at night.

Diet

Could run fast to catch small mammals and reptiles.

Did you know?

They looked totally different to how they are shown in the movies!

Size & Weight

2m long and 0.5m tall
Average weight 15kg



Sharp Claws

6cm-long curved claws helped catch and pin down prey - a bit like an eagle.



BUTTERFLY creek™

STEGOSAURUS

When did they live?



154-144 mya

Pronounced: "steg-o-saw-rus"

Meaning: 'Plated lizard'

Size & Weight

9m long and 4m tall

Av. weight 3100kg



Special Features

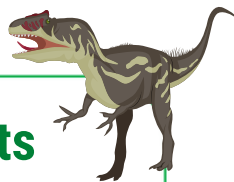
Large plates for display and maybe to help with temperature regulation.

Tail

Long spikes on end of tail to help defend against predators.

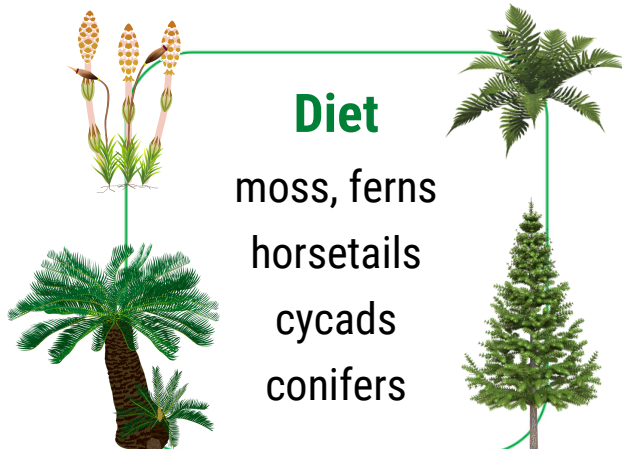
Threats

Hunted by big meat eating dinosaurs e.g. Allosaurus and Ceratosaurus.



Diet

moss, ferns
horsetails
cycads
conifers



BUTTERFLY creek™

DIPLODOCUS

When did they live?



155-145 mya

Pronounced: "dip-lod-er-cus"

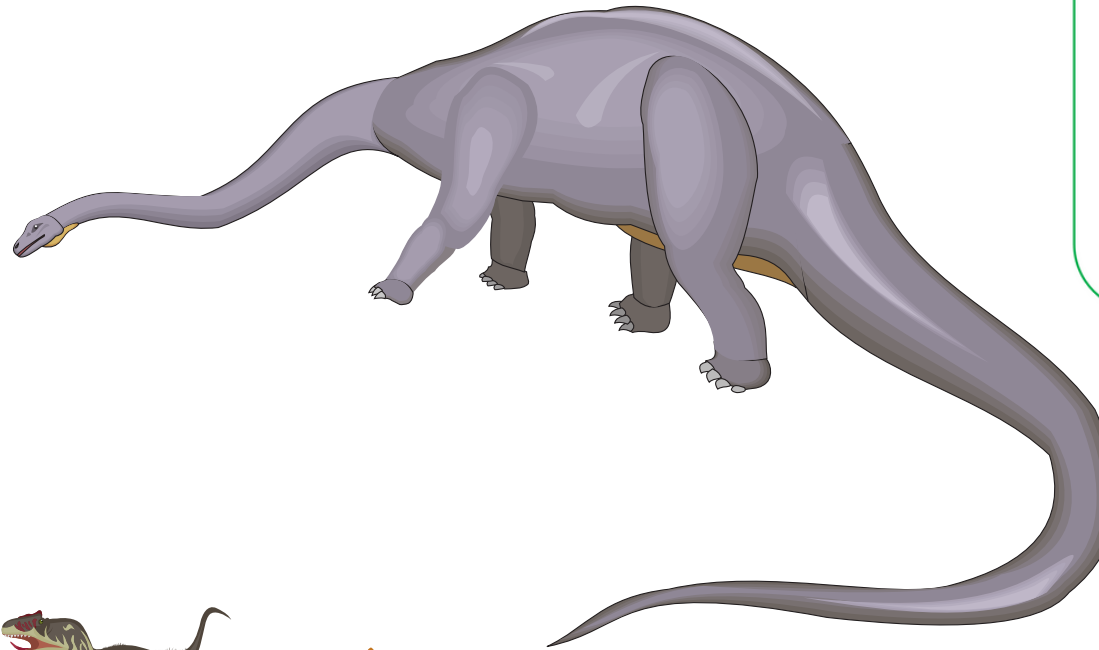
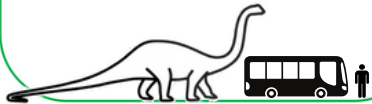
Meaning: 'Double beam'

Size & Weight

30m long and 5m tall

Average weight

15,000kg



Did you know?

Its tiny brain was the size of a child's fist. Its heart weighed the same as a small car!

Tail

Its 15m-long tail was used as a whip to help defend against predators.

Threats

Young diplodocus preyed on by large theropods e.g. Allosaurus.

Diet

club mosses
horsetails
ginkgoes
cycads, ferns



BUTTERFLY creek™

DILOPHOSAURUS

When did they live? 

Triassic

Jurassic

Cretaceous

202-190 mya

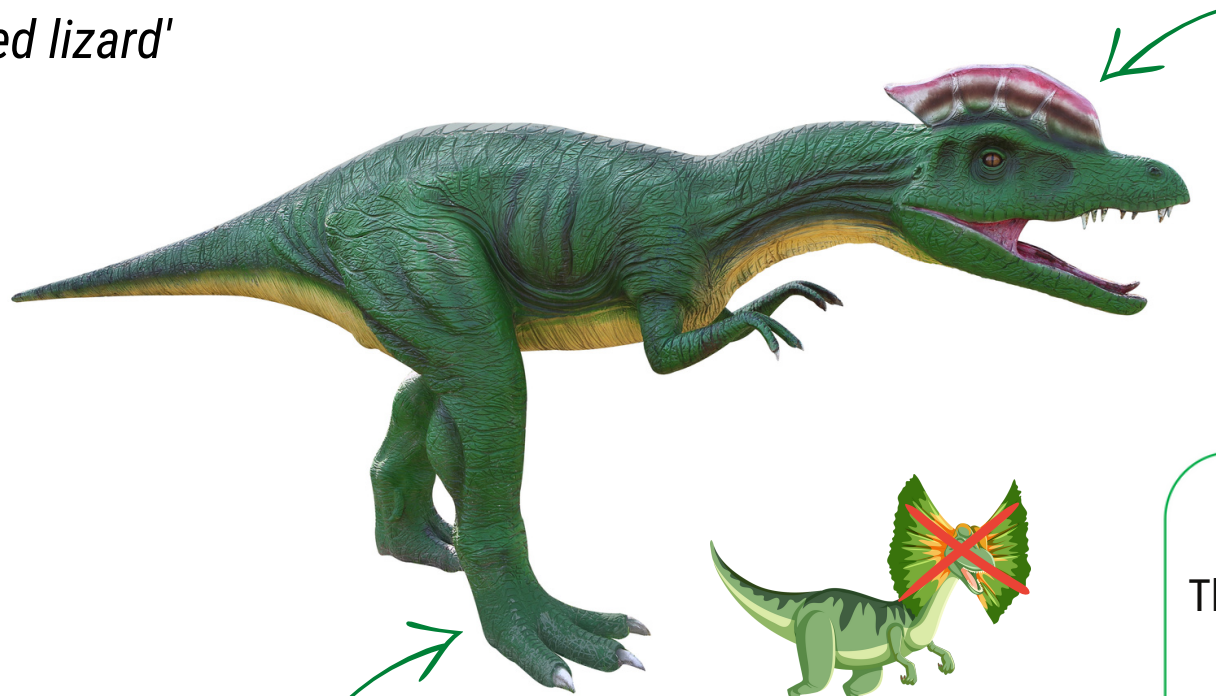
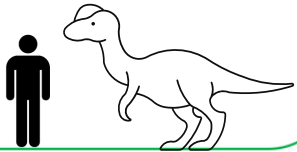
Pronounced: "die-loh-fo-sawr-us"

Meaning: 'Two-crested lizard'

Size & Weight

7m long and 3m tall

Average weight 400kg



Head Crests

Maybe used for display e.g. males warning off rivals and impressing females.

Behaviour

Three fossil skeletons have been found together, so they may have hunted in packs.



Did you know?

Movies often show dilophosaurus with a neck frill but there's no scientific proof of this.

Diet

May have hunted large dinosaurs. Could have also fed on smaller animals and fish.



Bipedal Posture

A tip-toe posture with 3 forward-facing toes gave this hunter a long and agile stride.



BUTTERFLY creek™