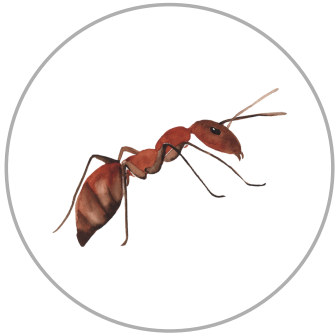
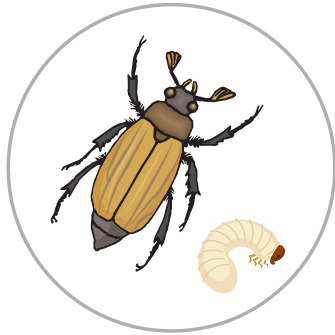


MINIBEAST HUNT

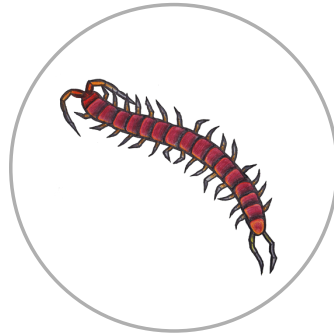
Look underneath rotting logs and plant pots, and dig down into mulch and soil to look for crawling minibeasts. Remember to put everything back carefully where you found it and wash your hands after your search.



ant



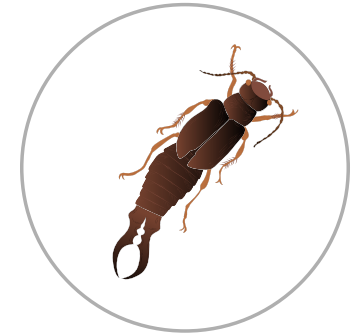
beetle / beetle larvae



centipede



cockroach



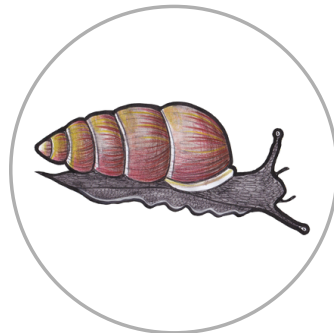
earwig



millipede



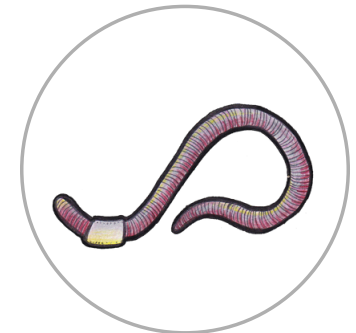
slater



snail



spider



worm

For a detailed identification key and photos to help identify what you find visit soilbugs.massey.ac.nz
With thanks to Green Grubs for many of the images used above. Images are not to scale.



BUTTERFLY creek™