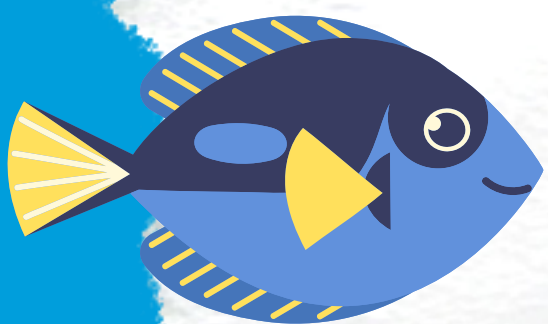


CREATE A MYTHICAL CREATURE



Use some of the features of Butterfly Creek's most popular animals and exhibits to create your own mythical creature. For example, your creature could have the head of a crocodile, wings of a butterfly, body of an otter and spines of a porcupine!



Could your creature have any fishy features - a tail to help it swim fast or gills to help it breathe underwater?

Butterfly wings would give your creature the ability to fly.

Other interesting butterfly features include a long curly tongue to reach nectar and being able to taste with their feet!



CREATE A MYTHICAL CREATURE



Iguanas already look a bit like mythical creatures!

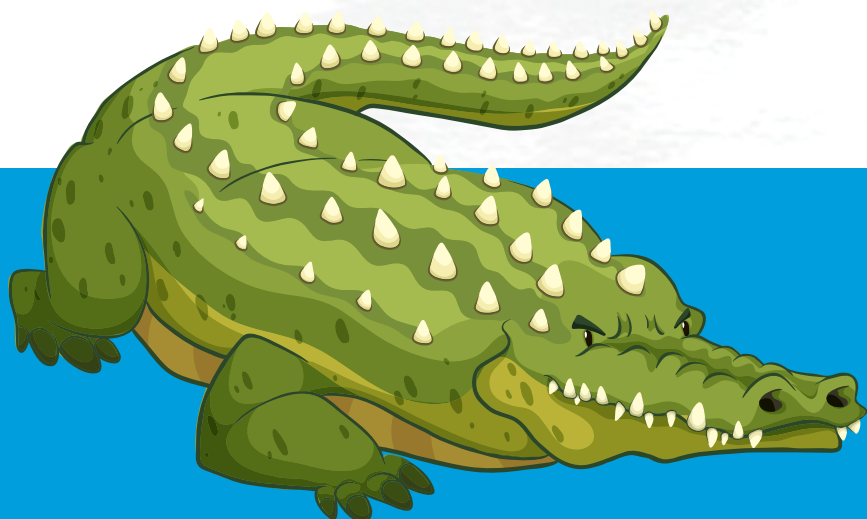
They have spines down their back and a whip-like tail which they use to defend themselves.

Their colour helps camouflage them so they can hide from predators in the undergrowth.

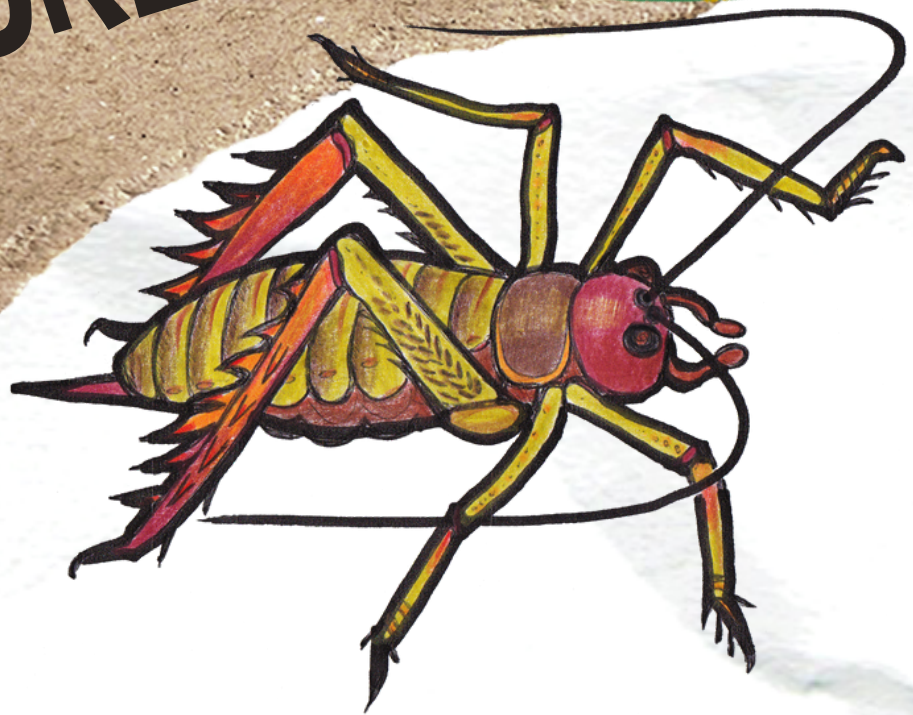


Perhaps your mythical creature could have eight eyes and eight legs, like a tarantula! Tarantulas have fangs to inject their prey with poison.

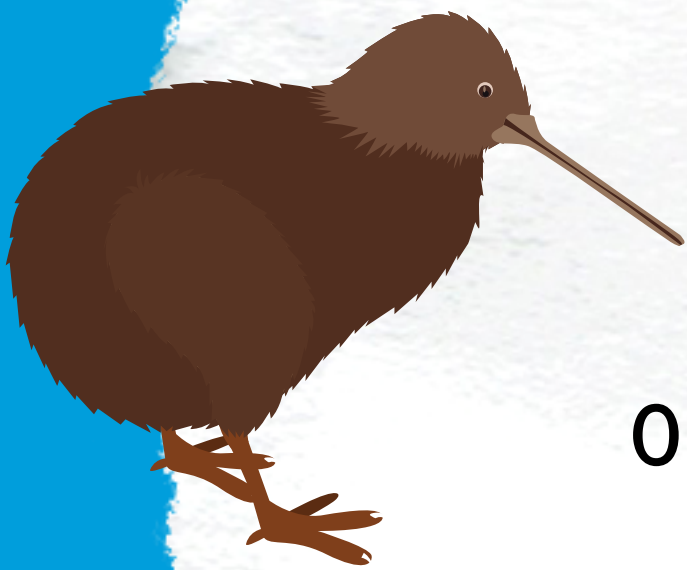
Saltwater crocodiles have many features that could be added to a made up creature including their many sharp teeth and ability to hold their breath for an hour whilst waiting for prey!



CREATE A MYTHICAL CREATURE



Giant weta or wētāpunga have some fascinating features you could include in a mythical creature. For example, their long antennae help them to feel their way around in the dark and they have ears on their knees! Their hard exoskeleton and spiny legs help protect them from predators.



Perhaps your creature could have a long beak to help it find food underground like a kiwi. Or fluffy feathers to help it keep warm.

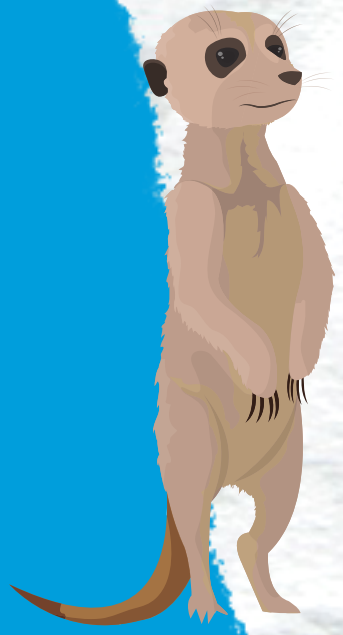
Your creature could have long, strong legs and large clawed feet like a moa. All 9 species of moa are now extinct.



CREATE A MYTHICAL CREATURE



Porcupine quills are a special type of thickened hair. Porcupines do not have the ability to launch their quills at an attacker, but they can fall out. You add some defensive quills to your mythical creature.



Think about where your creature might live. If it's a dry, sunny place you could give it dark patches around its eyes to help cut down the sun's glare, just like a meerkat.

If your creature lives in water, you could give it a long stream-lined body and webbed feet to help it swim through the water easily.



If it lives in the forest you could give it grasping hands and feet to help leap from branch to branch.



CREATE A MYTHICAL CREATURE

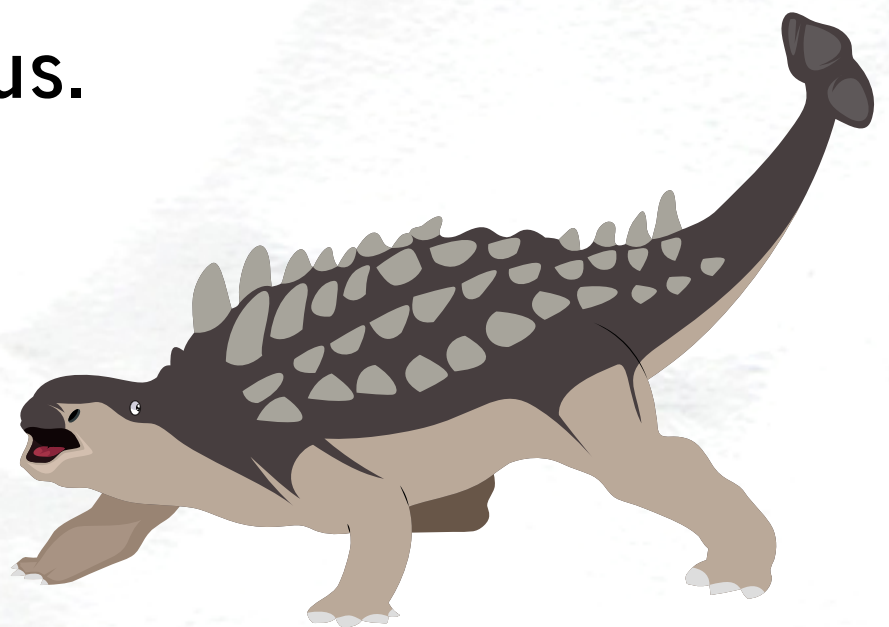


It's easy to see why people who came across the fossilised remains of dinosaurs and other prehistoric reptiles thought that they had found dragons!

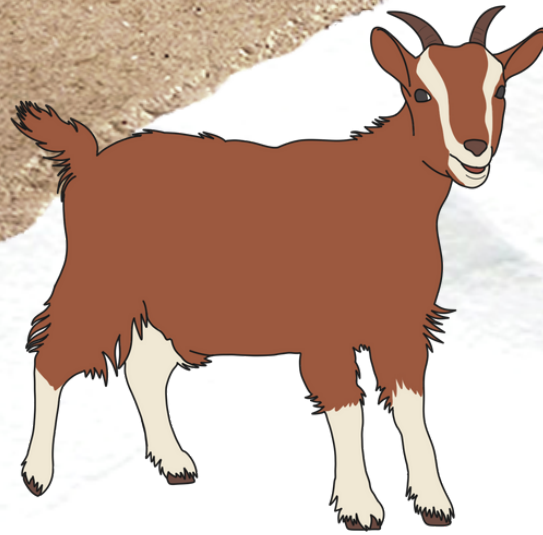


Dinosaur Kingdom has over 50 model dinosaurs with features you could include when designing your mythical creature.

Perhaps you could add defensive armour plating like an ankylosaur, or horns and a neck plate like a triceratops; or sharp teeth and claws like Tyrannosaurus rex; or a long neck and tail like diplodocus.



CREATE A MYTHICAL CREATURE

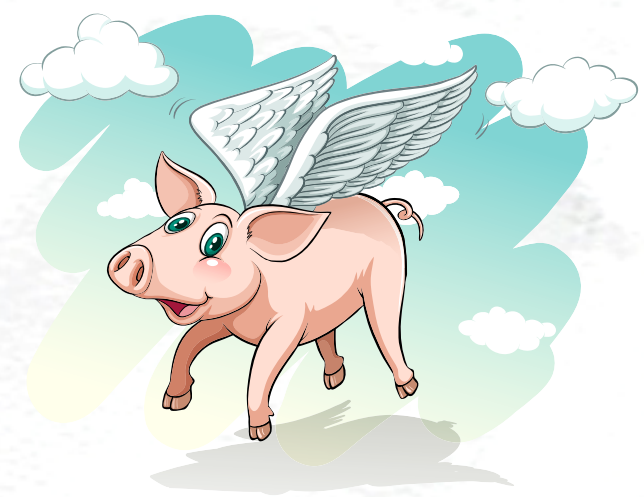


In Greek mythology, the god Pan has the legs, and horns of a goat. Fauns and satyrs are also half-goat and half-human. Visit Buttermilk Farm to meet our goats and some other friendly animals that have been incorporated in different myths and legends.



The jackalope is a mythical animal from North America. It is a jackrabbit with antelope horns that it uses for defence.

There is a flying pig in Greek mythology called Chrysaor who is the brother of Pegasus.



For more inspiration to help you create your own mythical creature click [here](#).

To learn more about mythical animals click [here](#).

